

Epitope Diagnostics, Inc.

FECAL OVA / PARASITE CONCENTRATION KIT

DESCRIPTION

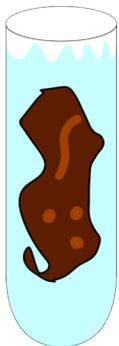
The Fecal Ova/Parasite Concentration Kit is a device that easily processes stool samples and to concentrate ova/parasite for further use and microscopic examination. For research use only. Not for use in diagnostics procedures.

BACKGROUND

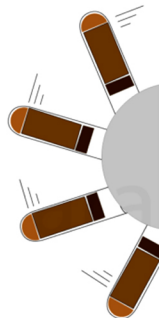
Fecal sample ova/parasite concentration is a routine procedure for improving detection rate or reducing false negative results during parasite screening. Traditionally, the concentration procedure used in laboratories requires the use of either ethyl acetate as a lipid removing agent and formalin as a fixative. This process involves the use of either expensive brass sieves or even tea strainers as the filter element. This device is intended for easy, effective, and clean processing of fecal samples, concentrating ova/parasites for microscopic examination.

PROCEDURE:

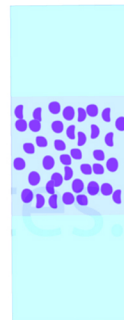
1. Collect stool sample



2. Centrifuge separates parasites and ova



3. Sample is added to slide with contrast dye



4. Technician then look at sample under a microscope. The technician is looking for parasite eggs (ova) and full sized parasites



Here's the full list of parasite that could be detected by a stool test:

Protozoa

- Entamoeba Histolytica
- Cryptosporidium
- Giardia lamblia
- Blastocystis hominis

Helminths (Worms)

- Roundworms
- Ascaris lumbricoides
- Hookworms
- Human whipworm

Flukes

- Chinese liver fluke
- Human liver fluke
- Blood fluke
- Tapeworms
- Pork tapeworm
- Fish tapeworm